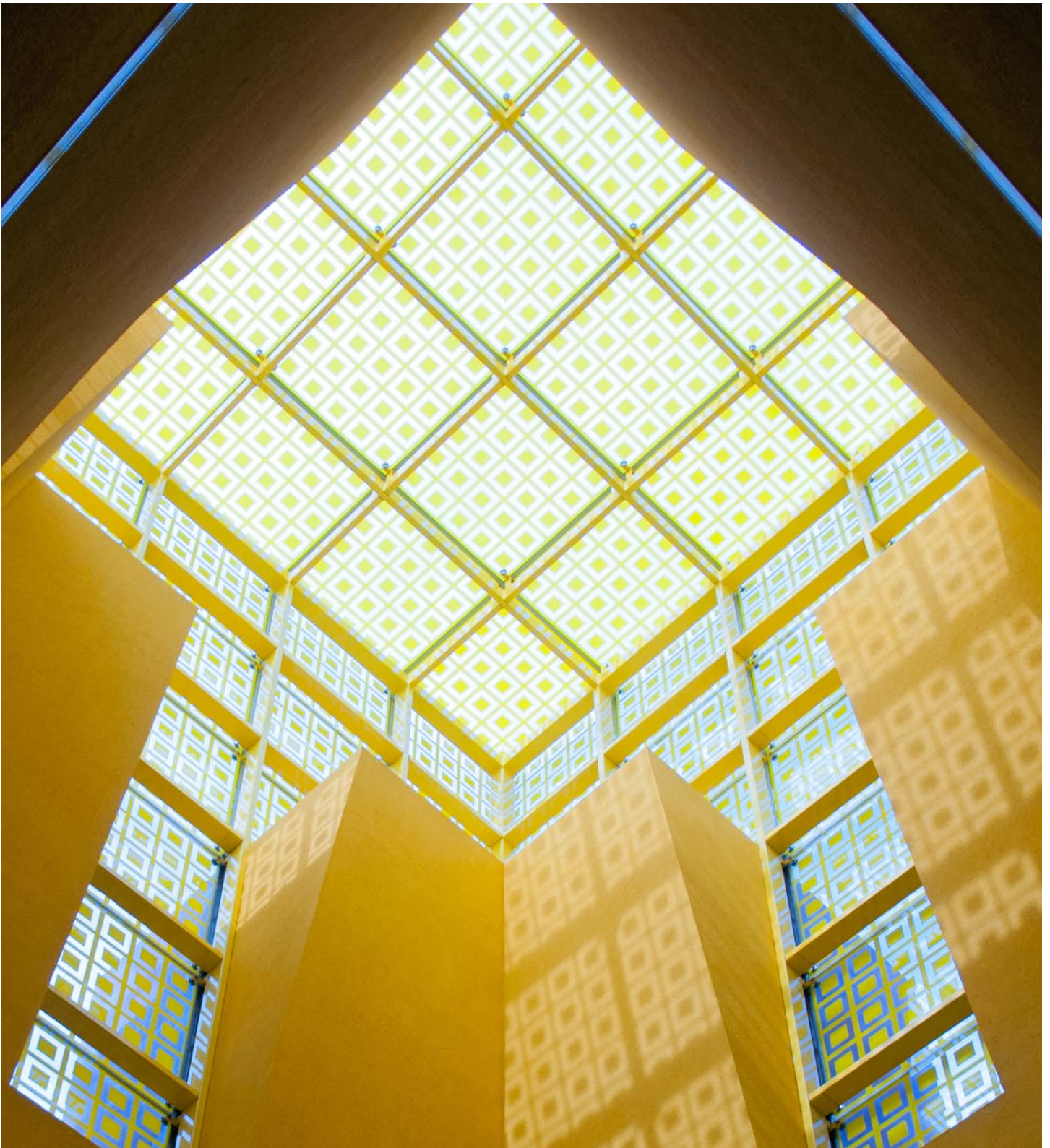


BB-System

Beam to Beam

Structural System

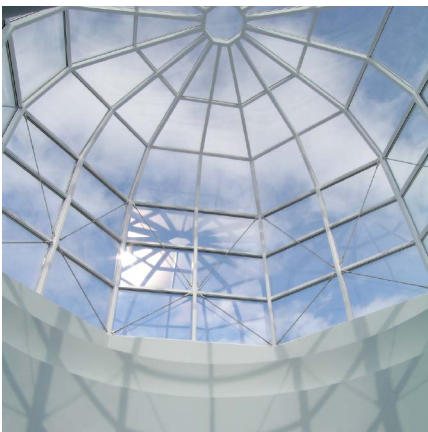
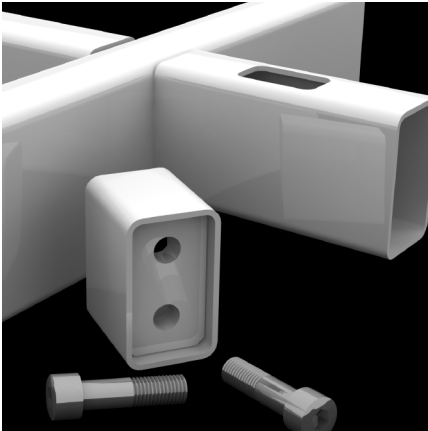
NOVUM



## BB-System

### Beam to Beam

## Structural System



### System Components

01. Nodeless system typically using mild steel hollow sections as structural members
02. Hot dip galvanized and liquid painted members are standard
03. Typically adopting hidden bolted connections which are structurally equivalent to the section capacity required
04. Bolts are coated and high strength in accordance with ASTM or DIN standards

### Applications

01. Single layer grid type structures requiring semi rigid connections and continuous members
02. Typically used for regular form planar geometries
03. Frequently used as a simple infill component for Novum AES, BK or FF Systems to enable smaller cladding subdivisions
04. Where solutions are desirable which do not have nodes or visible welding

### System Attributes

01. Contemporary hidden connection design aesthetic
02. Can achieve hairline connections without exposed bolts or visible welds
03. Hidden bolted connections which structurally permit close to the full section capacity to be developed
04. Semi rigid or bending stiff connections provide excellent stability and reasonable spanning capability
05. Structural profiles are optimized using varied wall thicknesses
06. Grid sizes are determined by applied loading or cladding type
07. Readily designed to achieve modest angular changes in surface planes
08. Structures and components are designed by Novum's in-house engineers
09. For cladding, this system integrates fully with all Novum Glazing and Membrane Systems

### Options/Materials/Finishes

01. Finish options include high performance polyurethanes or polyester powder coating over hot dip galvanizing
02. Alternatively, materials can be without galvanizing or be stainless steel
03. Access holes can be capped