

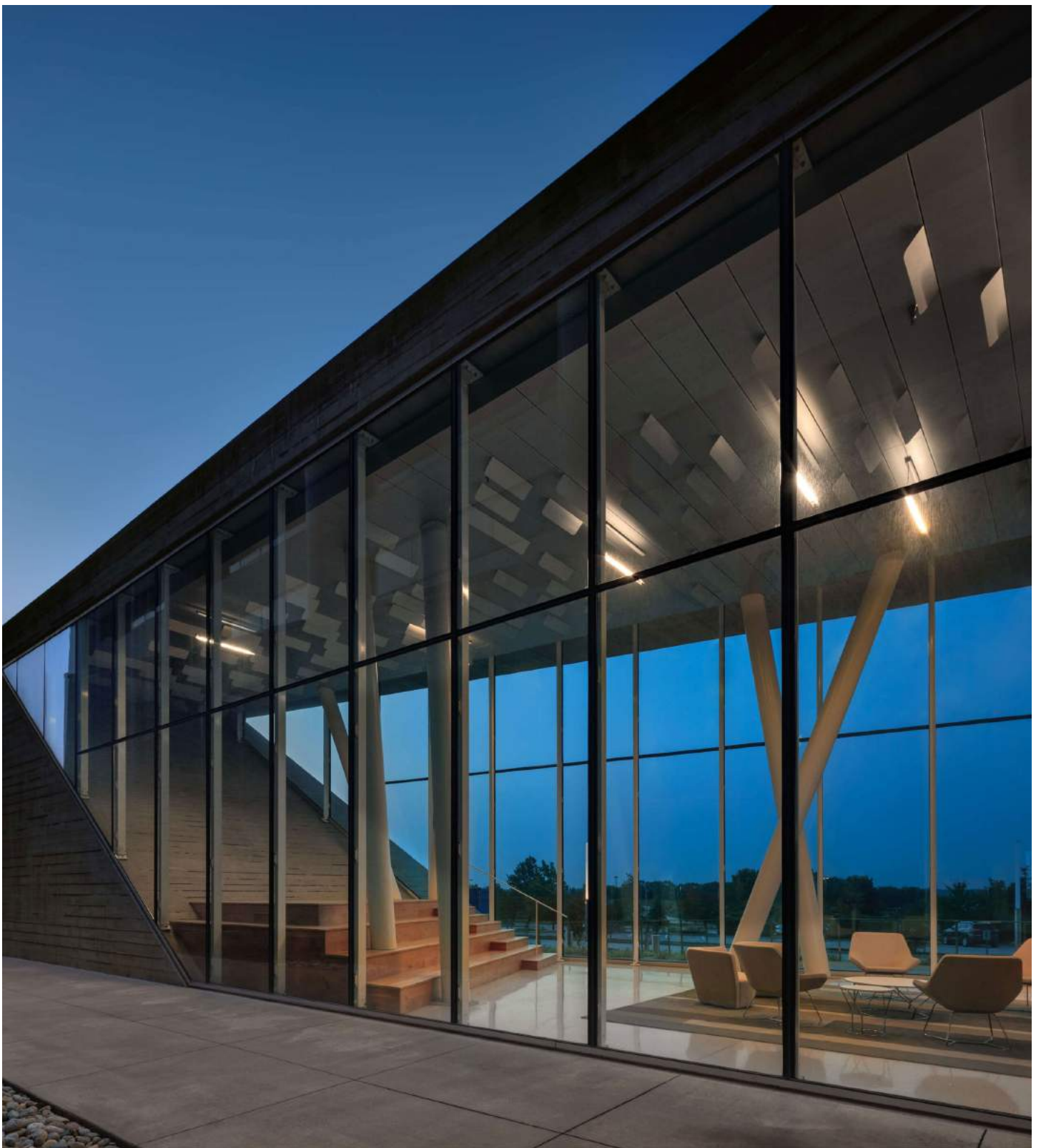
**Black & Veatch**

**World Headquarters**

**Overland Park, Kansas, USA**

Project Data Sheet

**NOVUM**



## Specifications

**Project:** Black & Veatch World Headquarters  
**Application:** Façade  
**Location:** Overland Park, KS, USA  
**Size:** 7,560 ft<sup>2</sup> / 705 m<sup>2</sup>  
**Architect:** HOK - Kansas City, MO

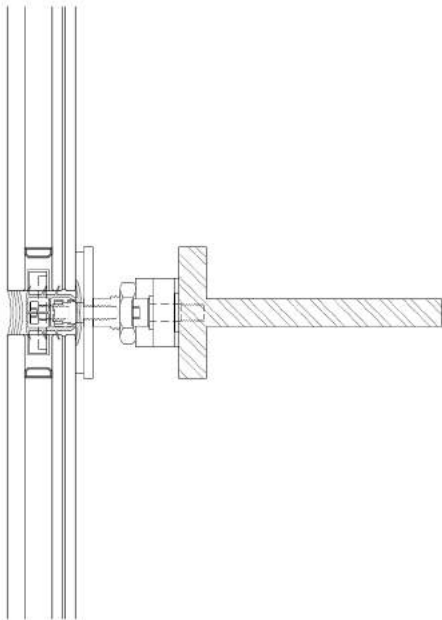
## Novum Systems

### Structural

**AES:** The support structure for the lobby façade is made up of Novum's Architectural Exposed Steel System (AES-System). A custom advanced fabricated T shape painted steel profile is suspended from the building structure above and placed behind each vertical glass joint to support the glazing. The vertical T profiles are merely 6" deep with a 3" wide flange.

### Glazing

**ECG:** The lobby façade is glazed with insulated and laminated clear glass with a low-E coating on the #2 surface. All the glass is fully tempered and heat soak tested. The glass is supported by Novum's Hidden Toggle Edge Clamped Glass System (Toggle ECG-System), which allows the exterior view of the facade to be uninterrupted by fasteners. The typical panel is 5' wide and 13' tall.



## Design Solution

After a collaborative effort between Novum and the architect to develop a design for the façade that wraps the lobby at this iconic office building in Overland Park, Kansas, Novum was contracted to engineer, furnish, fabricate, and install this project. Utilizing a very narrow and shallow vertical steel T shape profile and Novum's Hidden Toggle Edge Clamped Glass System, Novum built a highly transparent façade that appears clean and modern from both the interior and exterior of the building.

